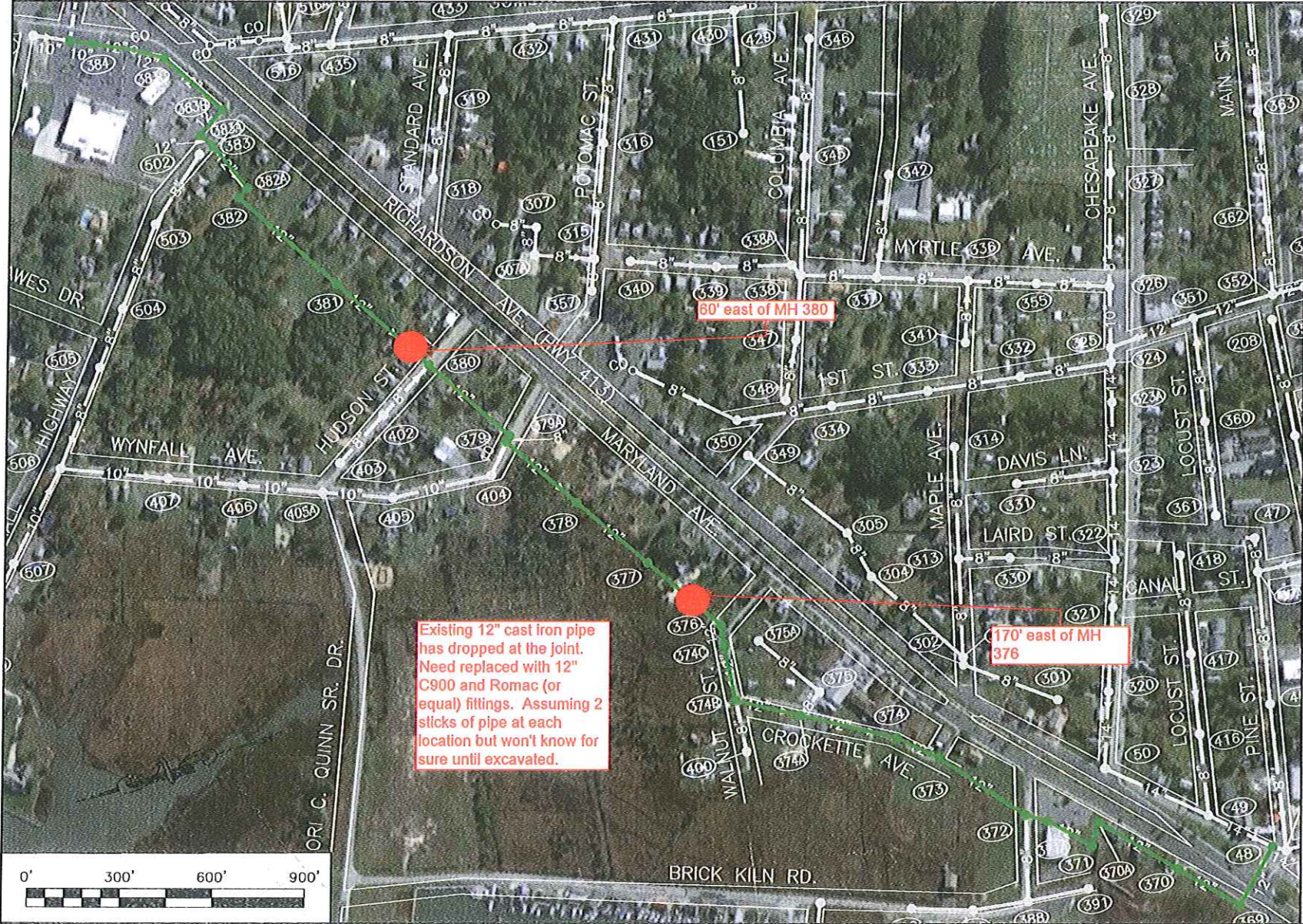


Q:\187\0187A022\EXHIBIT.dwg, Feb 23, 2018 - 1:55pm



Existing 12" cast iron pipe has dropped at the joint. Need replaced with 12" C900 and Romac (or equal) fittings. Assuming 2 sticks of pipe at each location but won't know for sure until excavated.

60' east of MH 380

170' east of MH 376

**SANITARY SEWER  
INSPECTION AND REPAIR**  
CITY OF CRISFIELD  
SOMERSET COUNTY, MARYLAND

**DAVIS,  
BOWEN &  
FRIEDEL, INC.** ARCHITECTS ENGINEERS SURVEYORS  
SALISBURY, MARYLAND (410) 542-9091  
MILFORD, DELAWARE (302) 424-1441  
EASTON, MARYLAND (410) 770-4315

Date: FEB. 2018 Scale: 1"=300' Proj.No.: 0187A022